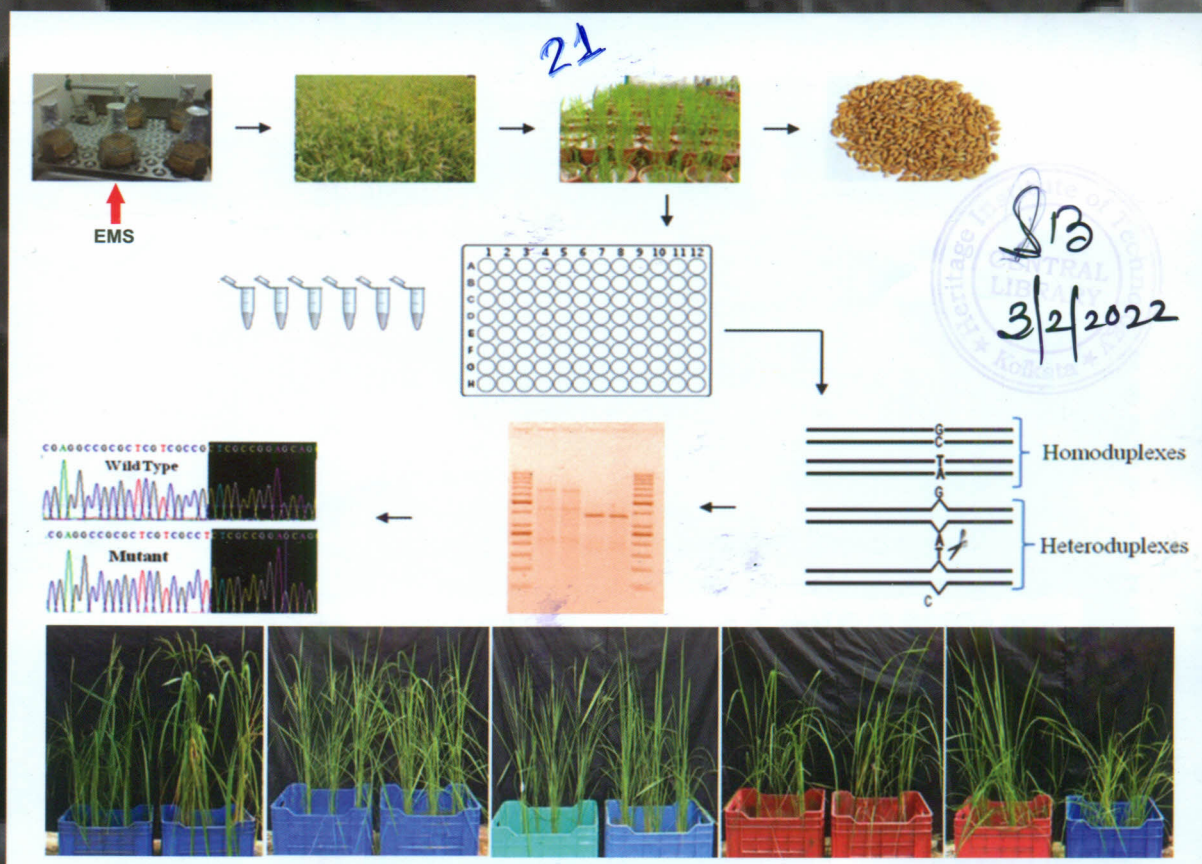
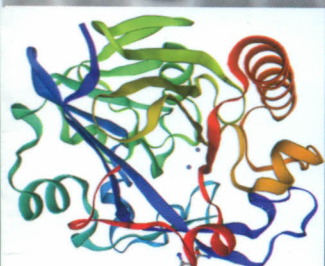
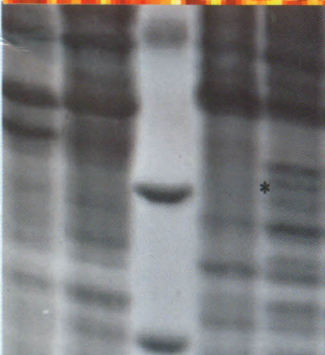
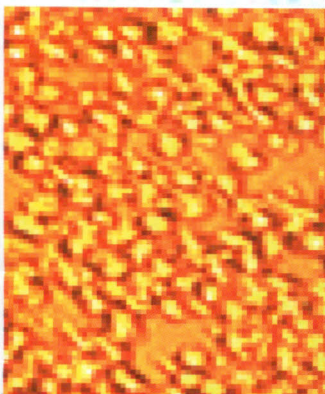


GT--GCKLFGFSL  
 GTAAGCKLFGFSL  
 GAVAGCKLFGFSL  
 GTAAGCKLFGFSL  
 GTAAGCKLFGFSL  
 GAVAGCKLFGFSL  
 GTVAGCKLFGFPL

# Indian Journal of Biotechnology



§13  
 3/2/2022



# Indian Journal of Biotechnology

<http://www.niscair.res.in>

VOLUME 20

NUMBER 1

January 2021

CODEN: IJBNAR 20 (1) (2021) 1-105

ISSN: 0972-5849 (print)

0975-0967 (online)

## CONTENTS

### Papers

- TILLING in the era of precise genome editing 9  
 Bhavesh Palan, Anjanabha Bhattacharya, Bharat Char
- Characterization of acyl-homoserine lactonase gene from *Brevibacillus brevis* strain B37 17  
 Syaiful Khoiri, Giyanto, Tri Asmira Damayanti
- Creation of leaderless FMDV replicon for development of replication defective virus (leaderless FMDV): A strategy towards the development of attenuated vaccine with marker facility 26  
 Swaroop Sarkar, V V S Suryanarayana, G R Reddy, H J Dechamma, S R Madhan Shankar
- A strategy to develop disabled infectious single-cycle (DISC) foot and mouth disease virus by 3B3 gene deletion using the infective cDNA copy of the genome 35  
 Swaroop Sarkar, V V S Suryanarayana, S Chandra Sekar, S R Madan Shankar, G R Reddy, H J Dechamma
- Anti-vibrio potential of bacterial and fungal endophytes isolated from *Datura metel* 43  
 Angkita Sharma, Pooja Singh, Sushmita Rajkhowa, Tankeshwar Nath, Bidyut Kumar Sarmah, Srikanta Ghosh, Karivaradharajan Swarnalakshmi, Shoma Paul Nandi
- Novel insights into biochemical and hormonal factors regulating floral transition in mango (*Mangifera indica* L.) 54  
 Y Bajpai, M Trivedi, M Muthukumar and A Bajpai
- Impact of heat stress on expression pattern of nine rice heat shock factor genes and its traits related to tolerance 65  
 Kubade Harshada V, Patil Arun H, Prabha Chaudhari and Girish Chandel
- Increased tolerance to photooxidative stress by overexpression of mitochondrial superoxide dismutase in transgenic tobacco 76  
 Shigeto Morita, Masato Kato, Yousuke Nakayama, Hidefumi Yokoyama, Hironori Kaminaka, Takehiro Masumura, Kunisuke Tanaka and Shigeru Satoh
- Genetic variability in strawberry (*Fragaria x ananassa* Duch.) cultivars assessed by morphological traits and EST-SSR markers of *Rubus ellipticus* 81  
 Samriti Sharma, Rajinder Kaur, Krishan Kumar, Heerendra Prasad
- Phenotyping, microsatellite marker analysis and linkage mapping of QTL for agronomic and root traits using IB370 × MAS-ARB25 F<sub>2</sub> rice (*Oryza sativa* L.) population grown under aerobic conditions 91  
 Rajesh Yogi, Naveen Kumar, Rahul Kumar Meena and Rajinder Kumar Jain

Instructions to Contributors

101