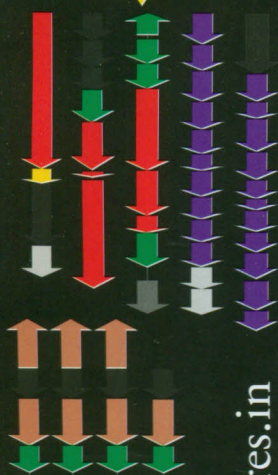
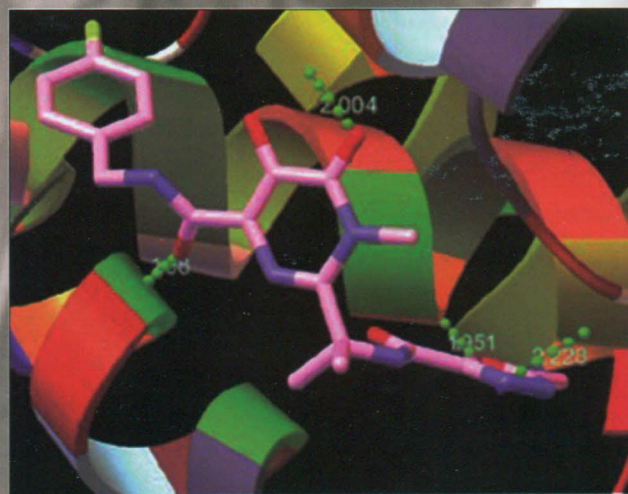
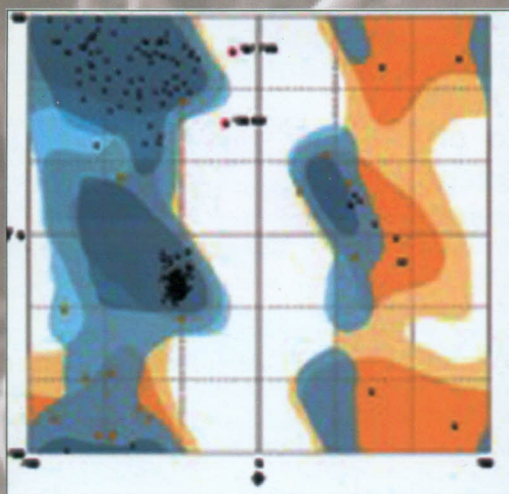
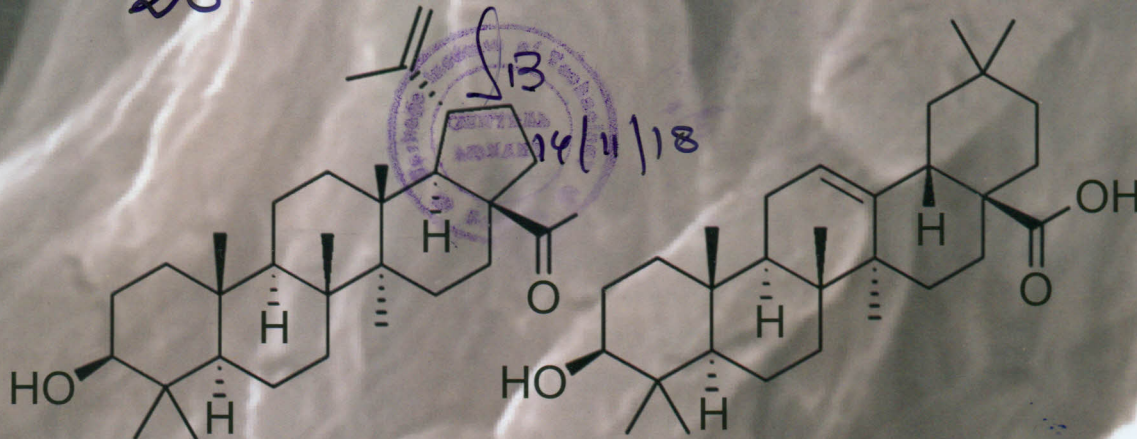


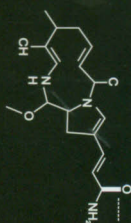
GCGATGGGCCCTCCTTACTCATCTAC  
 TACGGGTGAGTAACGCGTGGGAACA  
 AATTAATACCGCATACGCCCTACGGG  
 TGGATTCGCTAGTTGGTGGGGTAAAG  
 GAGGATGATCAGCCACATTGGGACTC  
 GRGGGAATATTGGACAATGGCGCGC  
 GGCCTTAGGGTTGTAAGCTCTTTCA  
 GCCCCGGCTAACTTCGTGCCAGCAG  
 AATTACTGGGCGTAAACGCGCACGT  
 GCTCAACTGCGGAACGCTTTGATA  
 ATTCCGAGTGTAGAGGTGAAATCGT

# Indian Journal of Biotechnology

28



www.niscair.res.in



CSIR-National Institute of Science Communication And Information Resources

New Delhi, INDIA

# Indian Journal of Biotechnology

<http://www.niscair.res.in>

VOLUME 17

NUMBER 3

July 2018

CODEN: IJBNAR 17(3) (2018) 391-544

ISSN: 0972-5849 (print)

0975-0967 (online)

## CONTENTS

### Review

- Value addition to soybean whey through microbial and enzymatic intervention 397  
Anshu Singh & Rintu Banerjee

### Papers

- In vitro* competence of vitrified bovine oocytes with open pulled straw 402  
D J Dutta, B C Sarmah, Hiramoni Dev & Himangshu Raj
- $\beta$ -galactosidase from *Lactobacillus delbrueckii* and *Lactobacillus reuteri*: Optimization, characterization and formation of galactooligosaccharides 407  
Eman Zakaria Gomaa
- Application of mobilization gene promoter for heterologous expression and curing of plasmid pSMA23 416  
Sudhamani M, Batish V K & Heller K J
- Molecular cloning and characterization of cDNAs encoding cytosolic malate dehydrogenase and vacuolar (H<sup>+</sup>)-ATPase in *Annona cherimola* and their expression during postharvest ripening 422  
Manuela Gouveia, Mónica Rodrigues, Lucília Teixeira & Nereida Cordeiro
- Cloning, sequencing and *in silico* analysis of  $\beta$ -glucosidase from *Bacillus subtilis* strain PS 431  
Gopal Singh, Vinod Kumar, Ashutosh dubey, Sanjeev Agrawal & A K Verma
- Application of statistical tool for optimization of physical parameters for cellulase production under solid state fermentation 441  
Modhuleena Mandal & Uma Ghosh
- Production and eco friendly application of alkaline protease from *Bacillus amyloliquifaciens* Sp1 448  
Shiwani Guleria, Abhishek Walia, Anjali Chauhan & C K Shirkot
- Genetic improvement in tomato (*Solanum lycopersicum*) against salt stress 459  
Sohail Ahmad Jan, Ghulam Muhammad Ali, Shaikat Ali, Sabir Hussain Shah & Nazir Ahmad
- Bacillus safensis* from wheat rhizosphere promotes growth and ameliorates salinity stress in wheat 466  
U Chakraborty, B N Chakraborty, P L Dey & A P Chakraborty
- Development of ISSR derived SCAR marker for economically important *Benstonea thwaitesii* (Martelli) 480  
Callm. and Buerki  
Vrushali Borse, Rahul Zanan & Altafhusain Nadaf

DNA fingerprinting of peach ( <i>Prunus persica</i> ) germplasm in accessing genetic variation using arbitrary oligonucleotide markers system Parul Sharma & Rajnish Sharma	484
Assessment of genetic fidelity of long-term micropropagated shoot cultures of <i>Achras sapota</i> L. var. 'Cricket Ball' as assessed by RAPD and ISSR markers M Chittora	492
Molecular characterization of parental lines and hybrids of maize cultivated in North-Western Himalayan region using microsatellite markers Anita Singh & J K Sharma	496
Efficient <i>in vitro</i> multiple shoots regeneration system from rice shoot apex in recalcitrant Malaysian Indica rice cultivars ( <i>Oryza sativa</i> L.) Teh Chui Yao, Maziah Mahmood, Noor Azmi Shaharuddin & Ho Chai Ling	504
Molecular phylogenetic affiliation of <i>Wolbachia</i> and Phage WO in storage pests from India Ravikumar Hemagiri Gowda, Atef Sayed Abdel-Razek, Prakash Bandekogenahalli Marappa, Sampath kumar Shankaranarayana, Huchesh Chanabasappa Hoolageri and Puttaraju Hosagavi Puttegowda	514
Comparative study on sequence characteristics of mature and precursor miRNAs of monocot and dicot plants Chittabrata Mal & Sudip Kundu	520
Usefulness of three DNA-PCR techniques to differentiate Jalapeño pepper varieties Ernestina Valadez Moctezuma, Abimael López-López & Claudia Verónica De Teodoro Pardo	527
Isolation and amplification of genomic DNA from nutmeg mace V P Swetha, V A Parvathy, T E Sheeja & B Sasikumar	533
<b>Short Communication</b>	
Identification of allele specific primers in chir pine ( <i>Pinus roxburghii</i> Sarg.) through data mining Swati Allen, H.S. Ginwal & Santan Barthwal	538
<b>Instructions to Contributors</b>	541