



CSIR

CSIR-India
www.csir.res.in
A CSIR Publication

Indian J Exp Biol (Monthly)

October 2025

CODEN: IJEB(A6) 63 (10) 795-880 (2025)

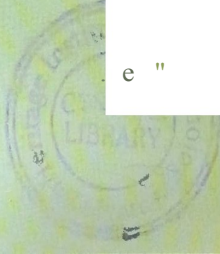
ISSN: 0019-5189 (Print); 0975-J009 (Online)

ijeb.niecpr@csir.res.in

Single copy: ? 736.00 \$96.00

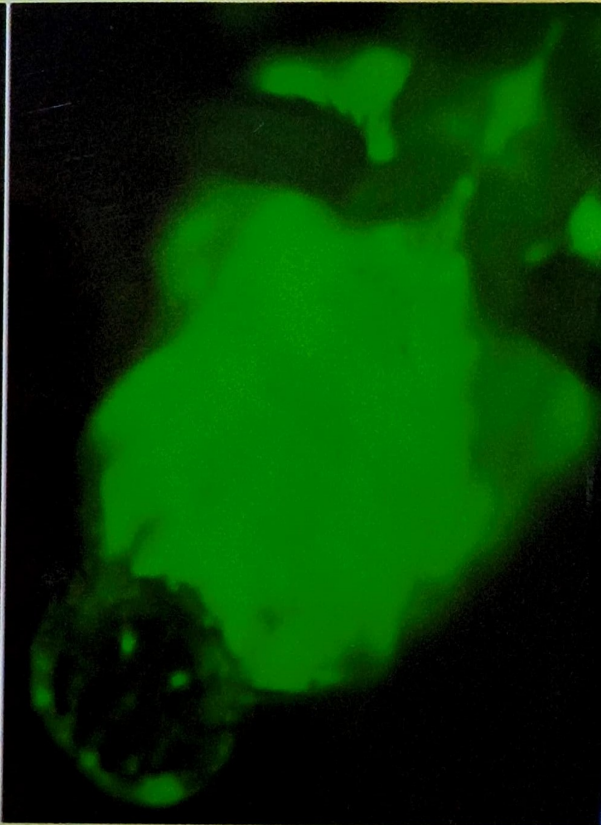
Annual Subs: ? 7360.00 \$960.00

Indian Journal of Experimental Biology



e "

25/3/2026
SB



CSIR-National Institute of Science Communication and Policy Research

New Delhi, INDIA

Indian Journal of Experimental Biology

<https://niscpr.res.in>; <https://nopr.niscpr.res.in>; <https://or.niscpr.res.in>

VOLUME 63

NUMBER 10

OCTOBER 2025

CODEN: IJEB (A6) 63 (10) 795-880 (2025)

ISSN: 0019-5189 (Print); 0975-1009 (Online)

CONTENTS

Papers

- Homocysteine induced upregulation of cell surface molecules in human peripheral blood mononuclear cells and U937 monocyte like cells 799
 Yusuf ELMA, ishak Ozel TEKiN, Nilgun SOLAK, Tunç Hakan SiPAHi & Emine YILMAZ CAN
- Ashwagandha attenuates organ oxidative stress and inflammation in tramadol treated and withdrawal rats 808
 Nadia M S Arafa, Shimaa S H Ahmed, Hoda G Hegazy & Elham HA Ali
- Evaluation of combined efficacy of Astragalus extract, vitamin E, and selenium on lead induced toxicity and apoptosis in rat ovaries 819
 Mahmut SAHIN F-2:um KURT, Haki KARA, Alper Serhat KUMRO, Gokhan YILMAZ & Mustafa ff'.
- Antigenotoxicity and immunomodulatory effects of extracts of representatives of the genus *Monarda* introduced in the Urals 829
 O Antosyuk, V Kostenko, Y Bobkov & E Bolotnik
- Effects of plant-based beverage consumption on serum levels of thyroid hormones 836
 Zahra Latifi, Saeid Abediankenari & Aliakbar Mashayekh
- Investigating anticancer potential of methanolic extract of *Cyperus rotundus* rhizome: *In vitro* analysis on Dalton's lymphoma cells and toxicity evaluation in mouse model 844
 Abhinandan Choudhury, Namram Sushindrajit Singh & Akalesh Kumar Venna
- ### Notes
- Protective effect of *Asphodelus aestivus* Brot. on bladder injury due to ischemia-reperfusion: Biochemical and histopathological Study 857
 Hatice Kopar, Işıl Yagmur, Ergül Beige Kuruta & Rabia Tural
- Role of miRNAs in amino acid metabolism: Model of ER stress in human dermal fibroblasts 863
 Nebiye Pelin Turker
- Stress driven divergence: Biochemical and enzymatic insights into aphid morph diversity 871
 Sayantani Nath, SVS Raju, Bhupendra Kumar & Gouri Shankar Giri
- Errata* 880

Author Index

hediank,mali S	836	Ilge7 11n	808	Raju SVS
hmC'd SSH	808	Kr... H	819	SAHIN M
Ali EH	808		857	
Antosyuk O	829			
Arafa I□,fS	80			
			829	Singh S
			871	SIPAHITH
Bobkov Y	829		819	SOLAK N
Bolotnik E			819	
			857	TEKiN JO
				TuralR
CANEY	799	i... J	836	TurkerPN
Choudhury A	844			
		ivl□sh yekhA	836	VennaAK.
ELMA Y	799	Nath S	871	
Giri GS	871	OZKARACAM	819	Yagmurl
				YILMAZG

Keyword Index

Activation marker	799	Flow cytometry	799	Phytochemicals
Adhesion	799	Functional foods	836	Plant extract
Antioxidant	857			Proinflammatory cytokines
Antioxidant activity	836	Histology	844	expression
Antitumor	844	Human skin cells	863	
Apoptosis	819			Seasonal incidence
Astragalus pc□:r □ □ □ □	819	Immune cells	799	Superoxide dismutase
Atherosclerosii	799	Indian mustard	871	
		Inflammation	799	Thyroid gland hormones
Biochemicai cor:i	871			Traditional medicine
Brain cortex	808	Lead toxicity	819	Tramadol induced kidney
Brainstem	808	lipaphis erysimi	871	dysfunction
Cancer	844	Malondialdehyde	857	Tramadol induced liver
Catalase	857	Metabolic adaptation	863	dysfunction
Comet-assay	829	Mosaicism	829	Tunicamycin
Drosophila	829	Non-coding RNA	863	Unfolded protein
				response

Enzymatic responses	871	Ovarian damage	819	<i>Withania somnifera</i> supplementation
Etoposide	829	Oxidative stress	857, 819	
Expression	829	Oxidative stress markers	808	